

Early Years and Education Department Induction



Introduction to the Early Years and Education Department

*✓ Please complete and bring on your first day of
college in September*

Name: _____

What will I be studying?

- **Level 1**

The course is career related and is open to students who wish to:

- *Obtain employment as assistants in Health & Social Care or Early Years settings*
- *Progress to Level 2*
- *Develop Social Skills, Caring Skills and an understanding of Early Years*
- *Gain a positive learning experience with like-minded fellow students.*

- **Level 2 Certificate in Supported Teaching and Learning**

This course is career related and is open to students who wish to be working as or progress to a Teaching Assistant; Learning Support Assistant; Special Educational; Needs Assistant or related roles.

The course consists of 11 units that cover a wide range of areas including:

- *Children and young people's development*
- *Supporting children's learning*
- *Young people's positive behaviour and communication*
- *Professional relationships*

You'll be required to complete hours in placement to be able to demonstrate skills and competency.

- **(T Level Foundation) Early Years Practitioner Level 2**

The T Level Foundation Programme provides a high-quality route onto T Levels for students who would benefit from the additional study time and preparation that it will give them before they start their T Level. Our T Level Foundation Programme, giving a licence to practice, and is a one-year course designed to develop the skills, knowledge and behaviours to support progression.

You will spend three days a week in college and two days a week on placement in a local early years setting. You'll be required to complete 250 hours in placement to be able to demonstrate skills and competency.

- **T Level in Early Years and Education: Early Years Educator**
- **T Level in Early Years: Assisted Teaching**

These are two-year technical study programmes, designed with employers to give young people the skills that the childcare and education sector needs.

You will spend 3 days a week in college and 2 days in either a local school (Reception class) or early years setting, and complete 750 placement hours over 2 years.

Students will be assessed via the core components of: 1 core paper exam, Employer-set project, Occupational specialism component through a series of synoptic assignments and assessments.

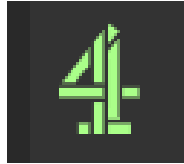


All of our courses cover safeguarding and welfare issues, which you may find upsetting. However, you can speak to staff and we can support you as needed.

Task 1

NETFLIX

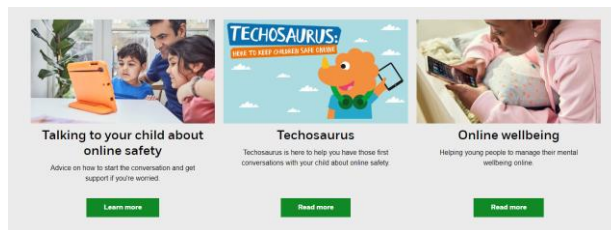
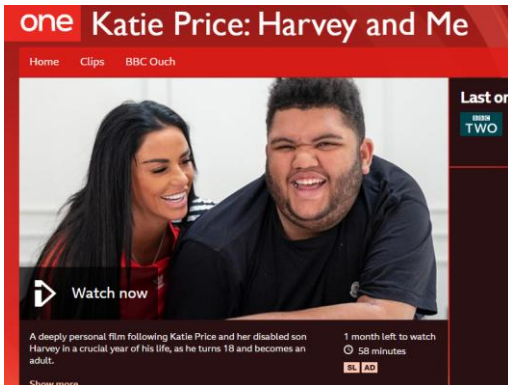
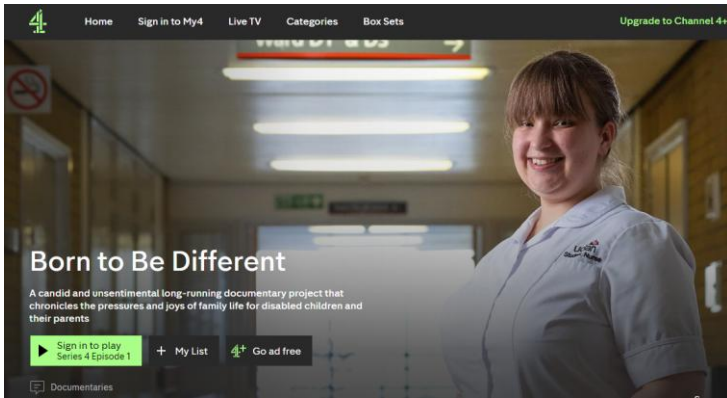
iPLAYER



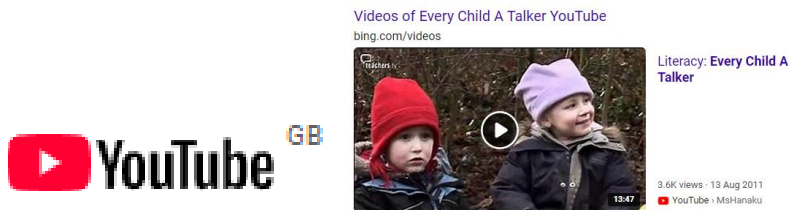
Recommended watching for Early Years and Education

Please choose 3 of the below programmes and write an outline of what you have learnt from watching on the page below...

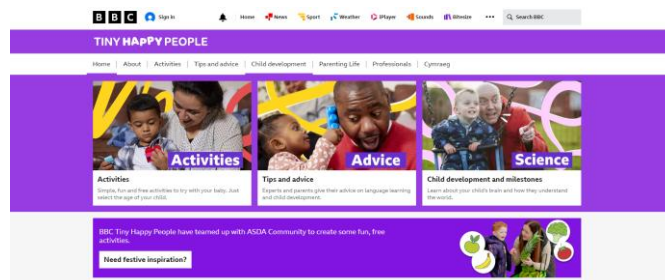




NSPCC



“Every Child a Talker”



2. Programme watched:

What I have learnt from watching this programme:

- What was it about?
- What did you learn about child development or behaviour?
- How could you apply what you have learnt in a real setting with children/young people?

1. Programme watched:

What I have learnt from watching this programme:

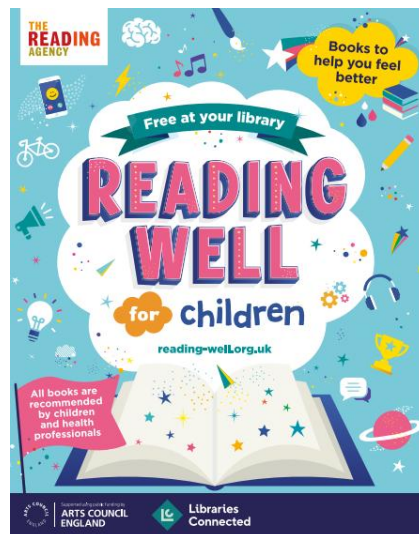
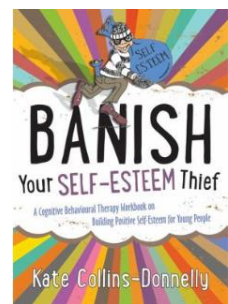
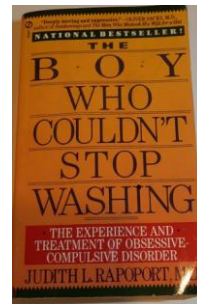
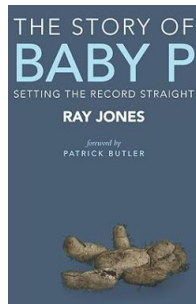
- What was it about?
- What did you learn about child development or behaviour?
- How could you apply what you have learnt in a real setting with children/young people?

3. Programme watched:

What I have learnt from watching this programme:

- What was it about?
- What did you learn about child development or behaviour?
- How could you apply what you have learnt in a real setting with children/young people?

Recommended reading for Early Years and Education



Recommended reading

Healthy minds

- What's Going on Inside My Head?**
Molly Potter, Sarah Jennings
Bloomsbury
- Healthy for Life: Self-esteem and Mental Health**
Anna Claybourne, Dan Bramall
Franklin Watts
- How Not to Lose It: Mental Health Sorted**
Anna Williamson, Sophie Beer
Scholastic

Worries

- Ruby's Worry**
Tom Percival
Bloomsbury
- Questions and Feelings About: Worries**
Paul Christelis, Ximena Jeria
Franklin Watts
- Grobblechops**
Elizabeth Laird, Jenny Lucander
Tiny Owl Publishing
- Me and My Fear**
Francesca Sanna
Flying Eye Books
- All Birds Have Anxiety**
Kathy Hoopmann
Jessica Kingsley Publishers
- Worry Angels**
Sita Brahmachari, Jane Ray
Barrington Stoke
- Outsmarting Worry**
Dawn Huebner, Kara McHale
Jessica Kingsley Publishers

Feelings

- How Are You Feeling Today?**
Molly Potter, Sarah Jennings
Bloomsbury
- Mindful Me: Exploring Emotions**
Paul Christelis, Elisa Paganelli
Franklin Watts
- Feeling Angry!**
Katie Douglass, Mike Gordon
Wayland
- Sometimes I Feel Sad**
Tom Alexander
Jessica Kingsley Publishers

The world around you

At school

- Dealing With Bullying**
Jane Lacey, Venitia Dean
Franklin Watts
- Planet Omar: Accidental Trouble Magnet**
Zanib Mian, Nasaya Mafaridik
Hodder Children's Books
- Ella on the Outside**
Cath Howe
Nosy Crow

Online

- #Goldilocks**
Jeanne Willis, Tony Ross
Andersen Press

In the news

- Something Bad Happened: A Kid's Guide to Coping With Events in the News**
Dawn Huebner, Kara McHale
Jessica Kingsley Publishers

Dealing with tough times

When someone dies

- Mum's Jumper**
Jayde Perkin
Book Island
- Michael Rosen's Sad Book**
Michael Rosen, Quentin Blake
Walker Books
- If All the World Were...**
Joseph Coelho, Allison Colpoys
Frances Lincoln Children's Books
- Clownfish**
Alan Durant
Walker Books

Getting through a tough time

- The Boy Who Built a Wall Around Himself**
Ali Redford, Kara Simpson
Jessica Kingsley Publishers
- Up and Down Mum**
Child's Play, Summer Maçon
Child's Play Ltd.
- The Colour Thief: A Family's Story of Depression**
Andrew Fusek Peters, Polly Peters, Karin Littlewood
Wayland

When you have a condition

Attention Deficit Hyperactivity Disorder (ADHD)

- Can I Tell You About ADHD?**
Susan Yamey, Chris Martin
Jessica Kingsley Publishers
- Check Mates**
Stewart Foster
Simon & Schuster

Autism Spectrum Disorders (ASD)

- Questions and Feelings About: Autism**
Louise Spilsbury, Ximena Jeria
Franklin Watts
- M is for Autism**
The Students of Lingsfield Grange School, Vicky Martin
Jessica Kingsley Publishers

Dyslexia

- The Illustrated Guide to Dyslexia and Its Amazing People**
Kate Power, Kathy Iwanczak Forsyth
Jessica Kingsley Publishers

Obsessive Compulsive Disorder (OCD)

- Double Felix**
Sally Harris, Maria Serrano
Wacky Bee Books

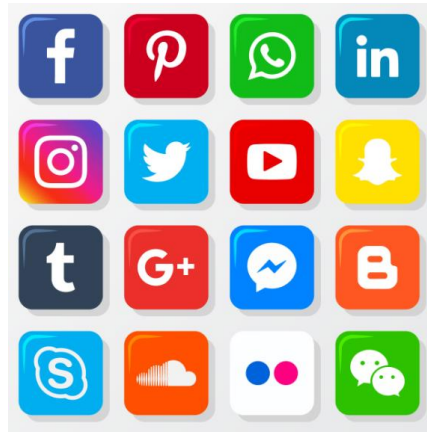
Having a disability

- Questions and Feelings About: Having a Disability**
Louise Spilsbury, Ximena Jeria
Franklin Watts

© The Reading Agency 2020.
The Reading Well core lists are only available for use as part of the Reading Well scheme. Permission to use this resource by non-subscribing agencies should be sought from The Reading Agency.

Task 2

Early Years and Education in the Media



One way of raising your awareness, before your course starts, is to look at different forms of media about Early Years and Education.

Examples:

Nursery doing daily toothbrushing sessions



GETTY IMAGES
Wolverhampton has the highest percentage of children with decayed or missing teeth in the country (generic pic)

Children in Need money is vital, says play bus team



JON WRIGHT/BBC
Mandy Potter and Lindsey Baddow, with Denis the new play bus, at their regular stop near Bath Street in Ipswich

High number of pupils regularly missing school



GETTY IMAGES
Ofsted says Covid lockdowns damaged the "social contract" that children must go to school

Nursery children bring smiles to home's residents



MONTESSORI PEOPLE
The children are regular visitors to the Stockton home

Your task:

Find a **news article about:**

Early years, Children, Schools or other Educational Settings and write about what you found out below

Include:

- *The headline and source it came from*
 - *A summary (3-4 sentences)*
- *Why is it important for children or education?*
 - *What are your thoughts?*

Task 3

Glossary

Task: Research and define the following words.

They are words you will need to use correctly.

<u>Term</u>	<u>Definition</u>
Child	
Development	
Safeguarding	
Education	
Play	
Behaviour	
Discrimination	
Inclusion	
Learning	
Holistic	

Interaction	
Milestones	
Policy	
Role model	
Transition	
Early help	
Multi-agency working	

Task 4

College readiness task:

- Write 3 goals you can think of for your time at College

1.

2.

3.

- List some items you will need to bring to College

- What will you need to wear when on placement with children and young people?

Task 5

Early Years and Education

RESEARCH TASK!

Choose a professional from the list below:

(You could choose your own idea from an Early Years & Education professional role if you'd prefer)

- Nursery Practitioner / Early Years Educator
- Teaching Assistant
- Primary School Teacher
- Special Educational Needs Coordinator
- Speech and Language Therapist
- Social Worker
- Children's Nurse
- Nanny
- Health visitor

Write a report (no more than an A4 sheet) explaining:

- **Why** you chose this professional?
- **What their role involves?**
- The **impact** they have on **children and/or education...**

We look forward to welcoming you on your chosen course!

This induction booklet is important for your progression onto the course and shows us your interests and why you have chosen this as your next step.

You can get in touch with us if you have any questions:
admissions@shrewsbury.ac.uk or info@shrewsbury.ac.uk

College reception: 01743 653000

Task completion checklist:

Task	Completed ✓
Task 1 – Early years & education programmes	
Task 2 – Early years in the media	
Task 3 - Glossary	
Task 4 – College readiness questions	
Task 5 – Early years and education job report	