



Shrewsbury College

Class of 2025-26

Welcome to Parents/Carers

James Staniforth
Principal

Steve McAlinden
Vice Principal Students



James Staniforth

Principal



Chris Sears

Vice Principal



Steve McAlinden

Vice Principal



Belinda Greenway

Curriculum Director EB



Jamie Hopkins

Curriculum Director WB



Cathy McAllister

Curriculum Director WB



Helen Morgan

Curriculum Director EB



Our Student Centred Ethos

We believe that all our students are special, unique individuals

We value all our students as individuals

We want to work with each individual student to ensure they are successful



To ensure this we set each student meaningful individual targets

Individual Targets are ...

Based on your **prior success** in your GCSEs and other Level 2 qualifications

Based on the **specific A Levels/CTEC courses** you are studying

Aspirational, but **achievable**

Minimum Target Grades (MTGs) – not maximum target grades

Calculating your GCSE Points on Entry Score

Each of your GCSEs is given a score ...

Reformed subjects		Unreformed subjects	
9	9	A*	8.5
8	8	A	7
7	7	B	5.5
6	6	C	4
5	5	D	3
4	4	E	2
3	3	F	1.5
2	2	G	1
1	1	U	0
U	0		

- Add up the total score and divide by the number of GCSEs
- This gives your GCSE points score on entry...
- Remember ... vocational qualifications count as their GCSE equivalent ... double awards count twice

An example ...

Student Sarah gained the following grades:

Maths	7
English Lang	6
English Lit	6
Combined Science (Double Award)	6/5
Geography	4
Art	7
French	6
Design and Technology	3
Drama	8

Score for each subject

- 7
- 6
- 6
- 6+5
- 4
- 7
- 6
- 3
- 8

Add up all ten GCSE scores

$$7+6+6+6+5+4+7+6+3+8 = 58$$

Divide by the number of GCSEs

$$\div 10$$

GCSE points score on entry = 5.8

Calculating your A Level MTG

Approx GCSE Grades	GCSE Score Band	A Level Subject MTG	CTEC Subject MTG	Overall MTGs
Mainly 9s	7.75+	A*/A	D*	A*AAA/A*AA
Mainly 8s	7.00-<7.75	A	D*	AAA
Mainly 7s few 6s	6.55->7.00	B	D*	ABB
Mainly 6s and 7s	6.10-<6.55	B	D*	BBB
Mainly 6s few 5s	5.65-<6.10	B/C	D*	BBC
Mainly 5s and 6s	5.21-<5.65	B/C	D*	BCC
Mainly 5s	4.77-<5.21	C	D*	CCC
Mainly 4s and 5s	4.37-<4.77	C	D	CCD
Mainly 4s	3.79-<4.37	C/D	D	CDD
Mainly 3s and 4s	3.05-<3.79	C/D	D/M	CDD/DDD
Mainly 2s and 3s	0.0-<3.05	D	M	DDD/DDE

Calculating your Art Extended Diploma MTG

Approx GCSE Grades	GCSE Score Band	Overall MTGs Extended Diploma
Mainly 7s, 8s, 9s	6.60–9.00	D*D*D*
Mainly 6s and 7s	6.17–<6.60	D*D*D*
Mainly 6s few 5s	5.67–>6.17	D*D*D*/D*D*D
Mainly 5s and 6s	5.23–<5.67	D*D*D*/D*D*D
Mainly 5s few 4s	4.76–<5.23	D*D*D
Mainly 4s and 5s	4.38–<4.76	D*DD
Mainly 4s	3.75–<4.38	DDD
Mainly 4s and 3s	3.31–<3.75	DDD
Mainly 3s	3.00–<3.31	DDM
Mainly 3s and 2s	2.58–<3.00	DDM/DMM
Mainly 2s	0.00–<2.58	DMM

You control your future

In 2025 there were **86 students** with a GCSE points score of 5.65-<6.10 ... they sat 243 A Levels

Their **MTG** for each subject was **B/C**

... **79% achieved their MTG or better**

Grade	Number of Student Grades	MTG
A*	8	Over-achieved by 3 grades
A	32	Over-achieved by 2 grade
B	82	Over-achieved by 1 grade
C	70	Achieved their MTG
D	37	Underachieved by 2 grades
E	11	Underachieved by 3 grades
U	3	Underachieved by 4 grades

Which student do you want to be?

Why did 192 students achieve their MTG or better?

They **attended all lessons**, turned up on time ready to work and with the right equipment

They **organised their week** so they knew when they needed to study, when they could socialise and when they could do part-time work

They **limited their part-time work** to 8-10 hours a week ... more than this costs one grade per subject

They **knew** what **their MTG** was and made sure all work was at least of this standard

They **asked for help** when they needed it and did not run away from their problems

They knew that what matters is **hard work** not being a genius

In return, their student support tutor and teachers provided feedback on their work that told them how to improve, provided extra sessions, 1-1 support and helped them solve their problems

Progress Grades and Individual Learning Plans

- We have provided each student with MTGs overall and for each subject
- Students should review all of their work against their MTGs and make sure they are clear what they need to do to improve – and make a note of these key actions
- **3 – 7 November** each subject will provide a **PROGRESS GRADE** – the grade we believe the student will achieve if they carry on working as they are doing
- Each teacher will discuss how to improve performance in each subject
- Students will meet with their Tutor and will agree how to improve and set targets for the next few weeks
- We will repeat this in **February 2026 and June 2026**



Student Support at English and Welsh Bridge Campuses

Steve McAlinden



College Expectations

Class requirements



- Attend all lessons
- Mobile phones at teachers discretion
- Arrive on time

- Only bottled water
- Don't distract others
- Be ready for a challenge



Are you respectful?



- Keep the college clean
- Arrive with all required equipment

- Eat and drink in designated areas only



- Keep one ear free from headphones



- Smoking and vaping is NOT allowed on campus

- Avoid offensive language

Are you safe?



- Report inappropriate behaviour
- Know where to go for help

- Be safe online



- Wear your ID badge at all times



- Follow guidelines
- Be safe online

- ZERO tolerance to drugs and alcohol

Are you employable?



- Wear appropriate clothing
- Have a positive attitude

- Respond positively to instructions



- Communicate clearly and respect others

- Be responsible and take ownership



The Study Programme at Shrewsbury College



Strong attendance is the bedrock of success

The higher your attendance, **the more likely you will enjoy your course and improve**

The higher your attendance the more likely you are to be there when assignments are set, so you will **understand what is required**, the more likely you are to **submit your work on time**, and the more likely you are to be in class when **feedback** is delivered.

Those with excellent attendance **experience the developmental build-up of skills and understanding** as it has been designed by the teacher.

And if you are always there, the teacher is more likely to pick up if you are struggling, and you are **more likely to be able to access any additional support** that is on offer.

Attendance gives **momentum, purpose and flow to learning.**

1. Attendance 95%+ = a full grade higher achievement compared to attendance below 85%!
2. Missing one lesson a week takes you from 95%+ to below 85%
3. This includes GCSE/Functional Skills English and Maths



	MONDAY	TUESDAY	WEDNESDAY	THURSDAY	FRIDAY	
08:00	Bridges Cafés and Learning Resource Centres (LRC) Open Free breakfast available in the cafés for students from 8 – 8:30. LRCs are open all day for independent study if you are not in a timetabled lesson or workshop; LRC staff are there to help you with study skills, research and resources.					
08:50	A	C	E	B	D	08:50
12:05						12:05
	Lunch	Lunch	Lunch	Lunch	Lunch	
12:50		Subject Support		Subject Support		12:50
12:55		Extension sessions		Extension sessions		12:55
13:30	F	Independent Study		Independent Study	E	13:30
14:20						14:20
14:40		D	F	A		14:40
15:00	B	Independent Study		Independent Study	C	15:00
		Enrichment		Enrichment		
16.10		Extension		Extension		16.10
17.00	Learning Resource Centres remain open until 5pm each day					

Study and relaxation areas

- Each campus has a Bridges Café with our food service offering a full range of hot and cold meals, drinks and snacks and Common Room facilities
- Free Breakfast club every day open to all students
- Free meals available for those who have been awarded a College Bursary
- Learning resource centres available at each campus open from 8am until 5pm



Parent portal

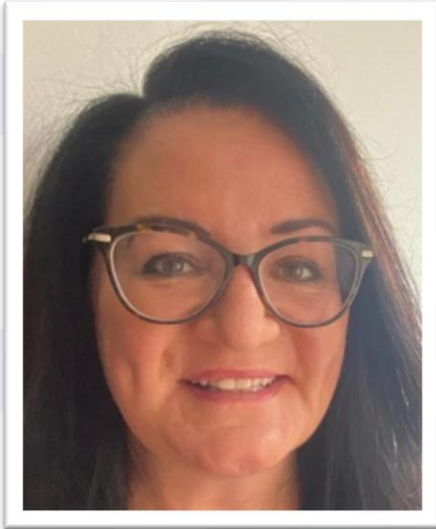
Available via Parent section of website in the Progress Monitoring area

Submit an account request

Any queries to **proportalqueries@shrewsbury.ac.uk**

Gives access to attendance information, progress review grades, targets, UCAS reference/ predicted grades and exam results





Lesley Hughes

Curriculum Support Team Leader

English Bridge campus



Jo Duly

Curriculum Support Team Leader

Welsh Bridge campus



Paula Tucker

Progression Specialist

Art & Design

English Bridge campus

Academic Student Support Tutors

Initials	Name	Contact details
CHI	Catrin Higgins	catrinh@shrewsbury.ac.uk
LEV	Laura Lloyd	laurae@shrewsbury.ac.uk
JMB	Jenny Barker	jennyb@shrewsbury.ac.uk
KSN	Kate Summerlin	katesu@shrewsbury.ac.uk
LHW	Louise Hughes-Williams	louisehu.shrewsbury.ac.uk
MAK	Marie Kitson	mariek@shrewsbury.ac.uk
MBR	Michelle Brewer	michelleb@shrewsbury.ac.uk
STA	Simon Talbot	simonta@shrewsbury.ac.uk
SNO	Simon Norton	Simonn@shrewsbury.ac.uk
TWI	Tom Willder	thomasw@shrewsbury.ac.uk
ECA	Emma Carr	emmac@shrewsbury.ac.uk
LHU	Lesley Hughes	lesleyh@shrewsbury.ac.uk

Vocational Art Personal Tutors

Group	Name	Contact details
Art and Design Group A and B	Simon Wilks	simonwi@shrewsbury.ac.uk
Fashion Group A	Jay Shuttleworth	jays@shrewsbury.ac.uk
Fashion Group B	Jay Shuttleworth	jays@shrewsbury.ac.uk
Photography	Claire Davies	Claired@shrewsbury.ac.uk
Art and Design Level 2 Group A	Ed Catley	edc@shrewsbury.ac.uk
Art and Design Level 2 Group B	Stefan Greco	Stefangr@shrewsbury.ac.uk
Foundation Diploma in Art & Design	Ed Catley	edc@shrewsbury.ac.uk

The Role of the Personal Tutor

First point of contact and advice for students and parents

Pastoral role

Attendance and progress monitoring

Delivery of the taught Tutorial Programme

1:1 target setting and action planning linked to Progress Grades

Support, advice and references for University, Employment and Apprenticeship applications

Student Services are based at all
3 campuses.

We offer advice, guidance and
signposting around all aspects of
support

These include Welfare, Transport
and Financial Assistance



London Road Campus

Mon-Thurs 8.30am – 4.30pm

Fridays 8.30am – 4pm

Welsh Bridge Campus

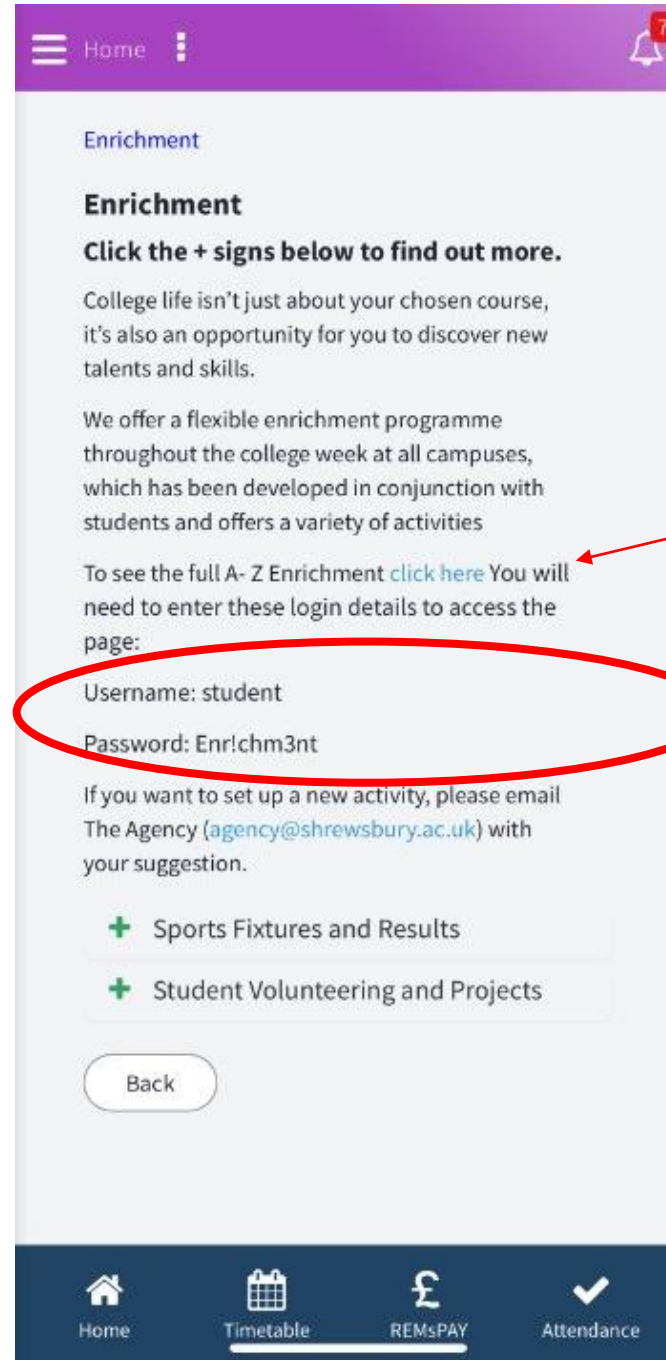
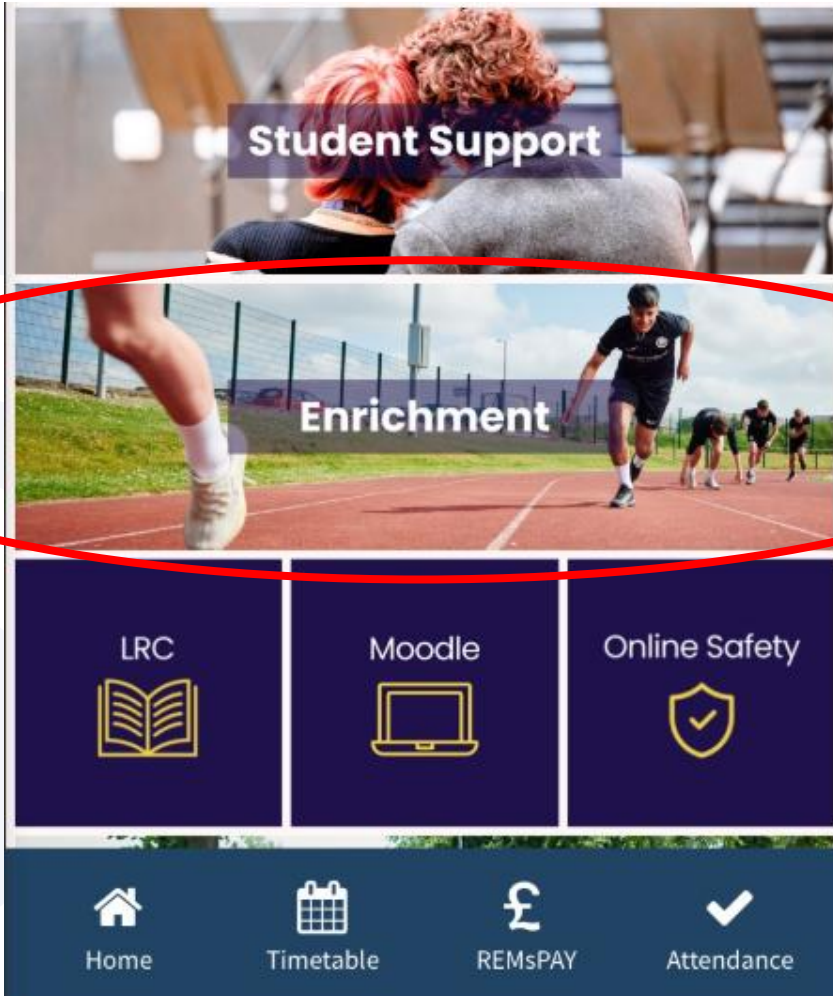
Mon – Thurs 8.30am – 4.30pm

Fridays 8.30am – 4pm

English Bridge Campus

Mon – Fri 8.30am – 4pm

Enrichment A-Z



Click through to access the 'A-Z of enrichment.'

You will need to use this username and password to log in and see all of the activities.

Student Engagement Coach

Jack Corcoran is our Student Engagement Coach

Jack runs a range of enrichment activities and is able to respond to student ideas or support student led groups

jackco@shrewsbury.ac.uk





Vickie Burrows
Safeguarding Mentor



Terri Jones
Safeguarding Mentor



Helen Phillips
Safeguarding Lead



Charley Haynes
Emotional Health and
Wellbeing Practitioner

Safeguarding and Wellbeing

If help is needed out of College hours, students can call the Student Assistance Programme on: 0800 028 3766

Careers and Progression Advice

Whether students are thinking about university, apprenticeships or employment – we can help!

Careers appointments

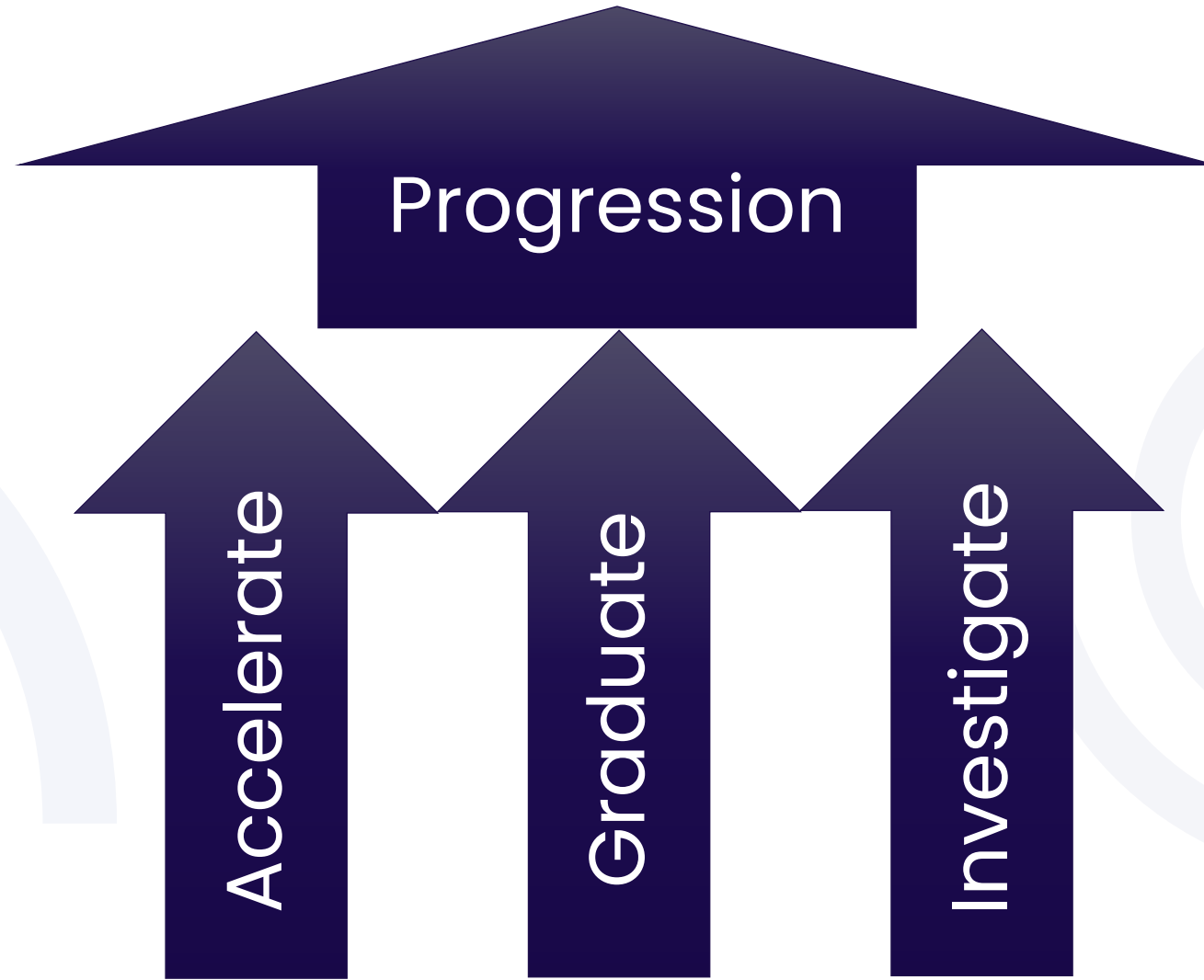
Work experience

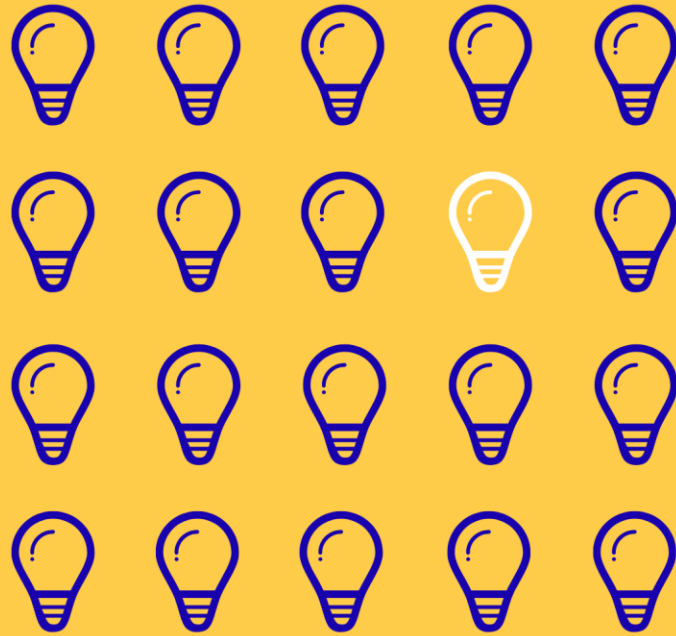
Application support

Interview preparation and much more

Weekly Careers Newsletter

SC Careers Pathways





FIND YOUR FUTURE 24 NOVEMBER 2025

**HIGHER EDUCATION, EMPLOYMENT,
APPRENTICESHIPS, GAP YEAR,
VOLUNTEERING AND MUCH MORE**



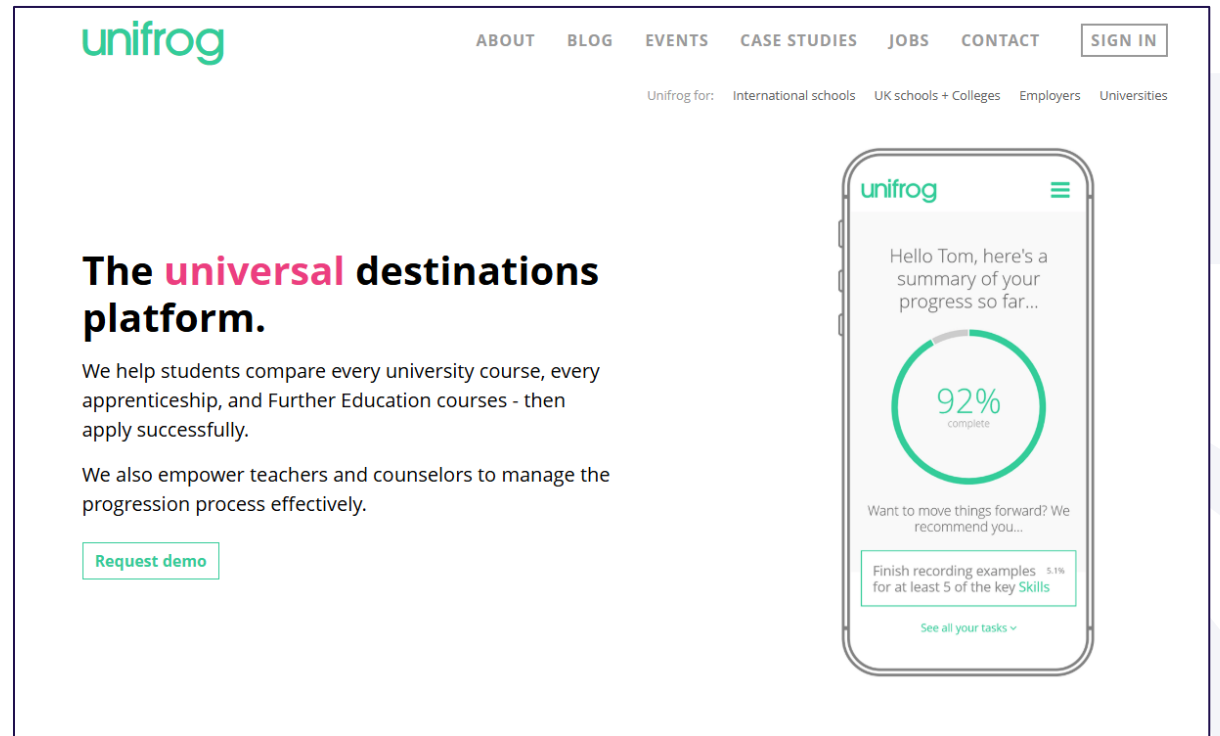


Unifrog is the college's online Careers platform

All staff and students have access to the platform

Parents can sign up too using the code CORXparents

<https://www.unifrog.org/sign-in>



Work Experience



Work Experience, including virtual work experience is available to all SCG students

Work experience will enhance your future employability and is great for exploring careers options

Nichola Mannering is based at English and Welsh campuses and you can book an appointment with her by emailing: nicholam@shrewsbury.ac.uk



Any Questions?